



# NAILSEA AND DISTRICT HORTICULTURAL SOCIETY



# SUMMER SHOW



## NAILSEA SCHOOL 3 AUGUST 2019 SCHEDULE OF CLASSES



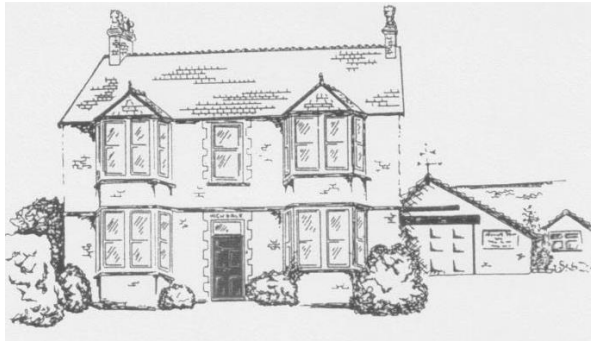
PARSONS BAKERY are very proud to be supporting the Nailsea Summer Show 2019.

ANY CAKE 95p!  
Cut out the voucher above to try any one of our delicious cakes for only 95p in August or September 2019!

Parsons Bakery has a long history with Nailsea - we've been here since the early 1920s. We've made a few changes since then! We now have 50 shops through out the South West & Wales and employ over 450 local people, but we still ~~hand-make~~ every single one of our goodies at the local bakery in Bristol. Cut out the voucher above to try any one of our delicious cakes for only 95p in August or September 2019!

11 Crown Glass Place, Nailsea : tel 01275 851112 [@ParsonsBakery](#)

[www.parsonsbakery.co.uk](http://www.parsonsbakery.co.uk)



## Highdale B & B

82 Silver Street, Nailsea, Bristol BS48 2DS

Telephone: 01275 858004

Email: [mail@highdalebb.co.uk](mailto:mail@highdalebb.co.uk)



**thecompleteflooringco.**

Your local,  
family-run **flooring**  
**retailer**

Huge Selection of Quality Flooring

Professional Service

Price Match Available

**NEW Rug  
Showroom**

01275 854673

[info@completeflooringco.co.uk](mailto:info@completeflooringco.co.uk)

Crown Glass Shopping Centre,  
4 Somerset Square,  
Nailsea  
BS48 1RP

# **NAILSEA FINANCIALSERVICES LTD**

## **INDEPENDENT FINANCIAL ADVISERS**

For Independent Financial Advice on  
**MORTGAGES: PENSIONS**  
**INVESTMENTS LIFE ASSURANCE**



**TELEPHONE: 01275 852000**  
**www.nailseafinancialservices.co.uk**  
**96 HIGH STREET, NAILSEA,**  
**BRISTOL BS48 1AH**

Nailsea Financial Services Ltd is authorised and regulated by the  
Financial Conduct Authority.

### **Silverlink Travel Services**

#### **Executive Mini Coach Hire**



16, 19, 22 seater Midi Coaches and 35 seater coach with driver for hire.  
Ideal for:

- **Weddings**
- **Corporate and business hire**
- **Group days out**
- **Airport transfers**
- **Sporting events**
- **Theatre & concert trips**

**We also offer a programme of coach day trips – please call for details**

Phone 01275 853312 for information or email us at  
[contact@silverlinktravel.co.uk](mailto:contact@silverlinktravel.co.uk)

[www.silverlinktravel.co.uk](http://www.silverlinktravel.co.uk)



# Aarons Pets Ltd

## Local Delivery!

Dog • Cat • Small Animal • Fish •  
Wild Bird • Poultry • Reptile



121 Station Road, Nailsea, BS48 1TA

Tel: 01275 852030

54 High Street, Portishead, BS20 9EL

Tel: 01275 842265



DRIVE & COLLECT FROM BOTH STORES!



Web: [www.aaronspets.co.uk](http://www.aaronspets.co.uk) Email: [shop@aaronspets.co.uk](mailto:shop@aaronspets.co.uk)

# NAILSEA SHOES

INDEPENDANT FOOTWEAR RETAILER

01275 853727



hotter<sup>®</sup>

Comfort. Style.

#nailsea  
shopping

CIPRIATA

[www.nailseashoes.co.uk](http://www.nailseashoes.co.uk)

## REGULATIONS GOVERNING THE SHOW

- 1 Classes are open to all comers except where specifically stated otherwise.
- 2 The entry fee is 25p per exhibit for the adult classes and 10p per exhibit for the children's classes.
- 3 An exhibitor may make two entries in any class, but may win only one prize in a class. In the horticultural classes, two exhibitors from the same address may only win one prize in a class.
- 4 Entry form and fees are to be in the hands of one of the following people by 9 pm on the Wednesday preceding the Show:  
Mrs Jane Knight, 68 Nailsea Park, Nailsea. BS48 1BB (01275) 855342  
Martyn Davis, Bay Tree Cottage, West End, Nailsea, BS48 4DE (01275 855563)  
PS Travel, Station Road, Nailsea (Shop hours - money & entry forms to be in a sealed envelope please)
- 5 Late entries may be accepted at the discretion of the Show Secretaries until 5.30pm on the Thursday prior to the Show. No late entries will be accepted on Show Day.
- 6 All exhibits in the horticultural section must have been in the possession of the exhibitor for at least two months. Exhibits in other sections must be the exhibitor's own work. Floral Art material may be purchased. In the photographic section entries must not have been shown in a previous show at Nailsea and must have been taken by the exhibitor.
- 7 Judging will be done to the relevant rules of the Societies to which the Society is affiliated.
- 8 In horticultural classes judges will recognise correct naming as telling in favour of an exhibit in close competition.
- 9 Any protest to an exhibit must be made in writing and accompanied by a fee of £1.00 before 2.00 pm on the day of the Show. The fee will be returned in the event of the protest being upheld.
- 10 The Society will take reasonable care of the property of exhibitors but will not accept responsibility for any loss or damage. The Society reserves the right to move any exhibit to assist display.
- 11 No exhibit shall be removed from the show until 5.00 pm on the day of the show without permission from the Show Secretaries. Any not removed by 5.30 pm may be disposed of by the Show Secretaries.
- 12 Prize money not claimed within 7 days of the show will be forfeited.
- 13 The Society reserves the right to view any exhibitor's gardens or exhibits either before or after the show.
- 14 Most Points Trophies. The winner will be the exhibitor with most points in the appropriate set of classes. In the event of a tie, the winner is the one with more first prizes than the other(s); if there is still a tie the winner is the one with more second prizes than the other(s). If however there are two or more contenders with an equal number of first, second and third prizes, then the trophy will be shared.
- 15 Any competitor failing to comply with these regulations may be disqualified from taking any prize whatsoever. All matters not provided for in these regulations shall be left to the decision of the Show Secretaries whose decision shall be final.
- 16 The placing of an entry is regarded as acceptance of the above show regulations.

**NAILSEA AND DISTRICT HORTICULTURAL SOCIETY**

**SUMMER SHOW 2019**

**TIMETABLE AND PROGRAMME OF EVENTS**

**WEDNESDAY 31 JULY** Last day for handing in entry forms

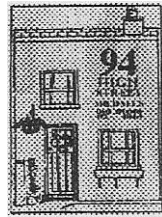
**SATURDAY 3 AUGUST**

6.30 am – 9.30 am	Staging of exhibits
9.30 am	Judging commences. All exhibitors must leave the show area
12.00 pm	Show open to the public
3.00 pm	Prize money can be collected from the Treasurer
4.30 pm	Presentation of trophies and special awards
5.00 pm	Show closes
5.15 pm	All exhibits must be removed by this time

TEAS AND REFRESHMENTS will be available.

**MICHAEL'S**  
**---HAIR DESIGN---**

94 HIGH STREET NAILSEA  
NORTH SOMERSET BS48 1AH  
Telephone 01275 856269



- We cater for all ages
- Free consultation from qualified staff of all ages
- Stockists of L'Oreal Colours and Elgon Products
- Gift vouchers available

**10% Discount** available on presentation of this voucher  
(with selected stylists only). Valid until 1 August 2019

## SHOW SECRETARIES' MESSAGE

It is a pleasure for us once again to welcome everyone to our summer show which is to be held on Saturday 3 August in Nailsea School.

The schedule will look familiar to our regular exhibitors but please read it carefully as there are some changes and if you have any questions please don't hesitate to contact us. It's much better to deal with any questions in advance.

We are awarding all of our perpetual trophies, the RHS Banksian medal and the medals of the various National Societies to which we are affiliated. Staging for all exhibits will take place on the Saturday morning only.

We are confident that the exhibits will provide an excellent display and there will be stalls, raffles and of course plenty of tea and home-made cakes for visitors to enjoy. Entertainment will be provided by the Filton Concert Brass Band. We are very grateful for the support of all our sponsors and advertisers and hope that everyone - exhibitors and visitors - will enjoy the show.

Martyn Davis          Jane Knight  
Joint Show Secretaries

### DATES FOR YOUR DIARY

Dates for the Society's shows next year are:

Spring Show          Saturday 4 April 2020

Summer Show        Saturday 1 August 2020

The Society's programme of meetings with talks on gardening subjects throughout the remainder of this year is set out on Page 23. Members will know that these meetings are always well attended but we are always pleased to welcome visitors and we can assure them of a very warm welcome.

PLEASE USE THE ENTRY FORM ON PAGE 24 OF THIS SCHEDULE



**NAILSEA & DISTRICT HORTICULTURAL SOCIETY**  
AFFILIATED TO THE RHS, NVS, NSPS AND NDS  
PATRON - NAILSEA TOWN COUNCIL

**PRESIDENT:** Phillip Williams

**VICE- PRESIDENTS:** Mrs E Anderson, D Everitt, Mrs I Tomlin, J Hobbs,  
Mrs E Frappell, Mrs A Caradine, Mr P Sallnow, Mrs P Santer

**OFFICERS**

**Chairman:** Martyn Davis

**Vice-Chairman:** Bryan Irwin

**Secretary:** Jane Knight

**Minute Secretary:** Keith Norwood

**Treasurer:** Valerie Davis

**Newsletter/Website Secretary:** Keith Norwood

**Publicity Secretary** Jenny Holman

**Joint Show Secretaries:** Jane Knight, 68 Nailsea Park, Nailsea. BS48 1BB (Tel 855342)  
Martyn Davis, Bay Tree Cottage, West End (Tel 855563)

**Programme Secretary** Beth Dent

**GENERAL COMMITTEE**

Janet Butterworth, Valerie Pickford, Mary Jaggard, Sue Groves, Helen Temple



**TRIGGOLS'**  
**VINTAGE CARS**

**TEL: 01275 852440**

[www.vintagewedding-cars.co.uk](http://www.vintagewedding-cars.co.uk)  
[info@vintagewedding-cars.co.uk](mailto:info@vintagewedding-cars.co.uk)

**Mobile Tel: 07712 051892**

## MEMBERS' CLASSES

CLASSES M1 – M7 ARE OPEN TO MEMBERS OF THE SOCIETY ONLY. ENTRIES IN CLASSES M1 – M4 and M7 MUST HAVE BEEN GROWN FROM PLANTS SUPPLIED BY THE SOCIETY DURING THE CURRENT YEAR

### CLASS

- M1 Begonia - shown in a pot not over 6½" (165mm)
- M2 Fuchsia - shown in a pot not over 6½" (165mm)
- M3 Pelargonium - shown in a pot not over 6½" (165mm)
- M4 Gerbera shown in a pot not over 6½" (165mm)
- M5 Sweet Peas - 5 stems - any variety(ies)
- M6 Vase of mixed garden flowers - not more than 10 stems, at least 4 kinds of flower
- M7 Planted container including at least one of each of the Begonia, Fuchsia, Pelargonium and Gerbera plants supplied by the Society. No other plants to be included (max size 450mm x 450mm).

## CLASSES FOR NAILSEA ALLOTMENT HOLDERS ONLY

(Sponsored by Nailsea Gardeners' Association) Please state plot number on entry form

### CLASS

- A1 Produce from your allotment in a container (max 18" square)
- A2 Dish of mixed fruit from your allotment
- A3 Vase of mixed flowers from your allotment

## OPEN CLASSES

### HORTICULTURAL CLASSES – VEGETABLES

#### CLASS

- 1 Mini collection of three distinct kinds of vegetables, two of each kind. Space allowed 2'6" (760mm)
- 2 Potatoes - five white
- 3 Potatoes - five coloured
- 4 Broad Beans - five pods
- 5 French Beans - five pods
- 6 Runner Beans - five pods
- 7 Runner Beans - longest one
- 8 Globe Beetroot - three topped
- 9 Cabbage - one
- 10 Carrot - long pointed - three topped
- 11 Carrot - other than long pointed - three topped
- 12 Cauliflower - one
- 13 Cucumber - ridge - one
- 14 Cucumber - frame or greenhouse - one
- 15 Garden Peas - six pods of one variety
- 16 Lettuce - one
- 17 Vegetable Marrow - pair
- 18 Onion - three, shown with tops
- 19 Onion - five, topped, to weigh not more than 250g (8¾oz) each
- 20 Onion - spring - bunch of six
- 21 Collection of culinary herbs - 3 cut bunches
- 22 Rhubarb - natural - three sticks trimmed to no more than 3" (75mm) green leaf
- 23 Rhubarb - three sticks for weight (no more than 3" (75mm) green leaf
- 24 Shallots - large - nine
- 25 Shallots - pickling size, not over 30mm diameter - nine
- 26 Cherry tomatoes - seven



Get your Carpets Feeling Fresh, Clean  
and Ready for 2019!

### Our Promise To You

- ✓ All staff are polite and friendly
- ✓ Fully trained and certified
- ✓ Furniture is moved by us and put back in place
- ✓ We are certified and insured
- ✓ No hidden charges
- ✓ 100% satisfaction guaranteed!



Call 07812 730 346 Today!

# John Brown

— Est. 1957 —

90 High Street, Nailsea, BS48 1AS

Discover our amazing range of products!

Look out for exciting offers in our regular specials leaflet

Tel: 01275 853368



Hardware & Cookware

Clocks and electricals

Cake Decoration supplies

Sekonda and Limit watch stockist

Or visit our website: [www.johnbrownhardware.co.uk](http://www.johnbrownhardware.co.uk)

- 27 Tomatoes - five
- 28 Courgettes - three - size 4" - 6" (100 - 150mm)
- 29 Parsnips - three
- 30 Collection of salad crops - not less than three kinds - max space 18"x18" (450mm)
- 31 Collection of vegetables in a trug
- 32 Parsley growing in a pot not greater than 5" (130mm)
- 33 Leeks - three
- 34 Any vegetable not mentioned in Classes 1 - 33
- 35 Collection of peas and/or beans - 3 cultivars, 5 specimens of each cultivar. Space allowed 18" (450mm) table run.

**FLOWERS**

**Classes 37 - 45 The Eric and Mary Robins Dahlia Classes**

- 37 Dahlia - pompon (max 55mm) - five
- 38 Dahlia - large pompon - three
- 39 Dahlia - small or miniature cactus/semi cactus - three
- 40 Dahlia - small or miniature decorative - three
- 41 Dahlia - small or miniature ball - three
- 42 Dahlia - medium decorative – three
- 43 Dahlia - medium cactus/semi cactus – three
- 44 Dahlia - any other type - three
- 45 A vase or bowl of mixed dahlias

**Classes 46 – 72 The Tom and Edith Greenwood Cut Flower Classes**

- 46 A collection of between 5 and 10 flowering stems in shades of one colour cut from at least two kinds of plants
- 47 A collection of flowers raised from seed during the twelve months preceding the show - space allowed 2' (610mm) - one container



## Ann and Joys Florist

130 High Street  
 Nailsea  
 BS48 1AH  
 01275 853209

Flowers for every occasion – Funerals, birthdays, anniversaries, births, weddings.

We also stock a selection of gifts, balloons, teddies and florist sundries.

Your local interflora florist for local same-day deliveries, national and world-wide deliveries.

We are always glad to help.

PLEASE USE THE ENTRY FORM ON PAGE 24 OF THIS SCHEDULE

- 48 Asters - single - five
- 49 Asters - double - five
- 50 Gladioli - 400s or 500s - three spikes
- 51 Gladioli - up to 300s - three spikes
- 52 Gladiolus - any size - one spike
- 53 Nicotiana - 3 stems
- 54 Collection of perennials - one container
- 55 Marigolds - French - nine
- 56 Marigolds - African - five
- 57 Herbaceous perennials - two varieties displayed separately
- 58 Pansy and/or viola - nine in a container with own foliage
- 59 Garden pinks and/or carnations - one container
- 60 Phlox - three stems
- 61 Roses - specimen (HT) - three blooms
- 62 Rose - specimen (HT) - one bloom
- 63 Roses - cluster flowered (Floribunda) - one stem
- 64 Roses - cluster flowered (Floribunda) - three stems
- 65 Sweet Peas - seven stems - any variety/varieties
- 66 Sweet Peas - two vases of five stems - two different varieties
- 67 Sweet Peas - 5 stems - one vase - one variety
- 68 Zinnia - three
- 69 Annuals - two varieties raised from seed during the twelve months preceding the show - displayed separately
- 70 Collection of cut flowers - one of each variety, displayed in a container – maximum space 18" (458mm)
- 71 Best cut flower from your garden - one bloom, stem or spray
- 72 Collection of Flowers - 3 vases, one variety per vase - minimum of 2 different genus

## POT PLANTS

Maximum pot size 8" (205mm) diameter or as stated

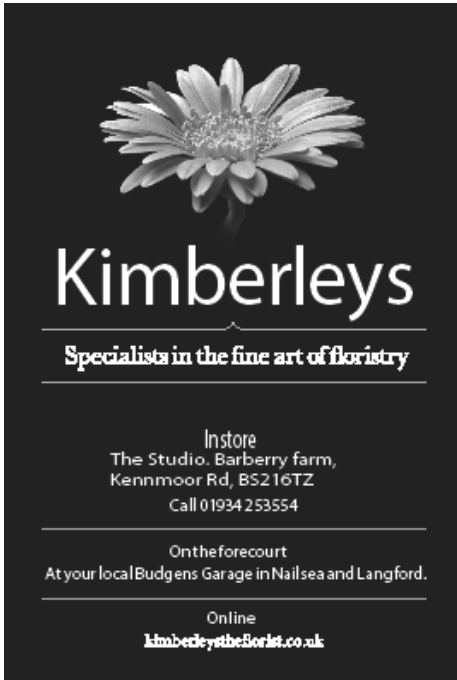
- 74 3 Pot Plants - 2 or 3 different genus
- 75 Fern - any variety - including asparagus
- 76 Begonia - grown for foliage
- 77 Coleus - one
- 78 Foliage Plant - other than coleus or begonia
- 79 Cactus or succulent
- 80 Begonia - large flowered tuberous rooted
- 81 Begonia - other than large flowered tuberous rooted
- 82 Fuchsia - single cultivar growing in pot not over 6½" (165mm) in diameter
- 83 Fuchsia - double cultivar growing in a pot not over 6 ½ " (165mm) in diameter
- 84 Fuchsia - any cultivar growing in a pot not over 4" (100mm) in diameter
- 85 Pelargonium - Zonal
- 86 Pelargonium - Regal or Angel
- 87 Pelargonium - Scented Leaf or Stellar
- 88 African Violet
- 89 Flowering plant - other than Fuchsia, Begonia, Pelargonium or African Violet

## Classes 90 - 92 The Bill & Eileen Copestake Planted Container Classes

- 90 Flowering window box - not to exceed 24"x 9"x9" (610mm x 230mm x230mm)
- 91 Patio container - (Max 450mm x 450mm)
- 92 Hanging basket - maximum diameter of basket 15"(382mm) - to be displayed on a bucket, bucket to be supplied by exhibitor

## FRUIT

- 93 Gooseberries - ten
- 94 Raspberries - ten
- 95 Blackcurrants - ten strings
- 96 Redcurrants - ten strings
- 97 Any other fruit
- 98 Collection of fruits - 3 different varieties



## FLORAL ART

**(Sponsored by Kimberley's Florists)**

Space allowed 2'3" (680mm) width x 2'3" (680mm) depth, height unlimited, unless otherwise stated. All must be the unaided work of the competitor, but may be brought ready assembled.

- 100 Nature's Bounty - an arrangement
- 101 Small and Beautiful (a petite arrangement max 25cmx25cmx25cm)
- 102 A Floral Celebration Cake
- 103 A Seascape arrangement

NOVICE CLASS (Open only to those who have not previously won a First Prize in this section of the Summer Show at Nailsea)

- 104 A Posy arrangement (max 30cmx30cmx30cm)

## COOKERY

All entries must be home-made from basic ingredients. All cookery entries to be on a plate and doily and covered in clear bag.

- 120 Savoury scones - four
- 121 Scones - plain - four
- 122 Chocolate brownies - four
- 123 Shortbread biscuits - four
- 124 Gluten-free cake (please supply recipe)
- 125 Rock cakes - four
- 126 Fruit cake - see recipe on page 18
- 127 Victoria sponge - see recipe on page 18
- 128 Loaf of Bread - any type - hand made

- 129 Loaf of Bread - any type - machine made
- 130 An apple cake
- 131 Tea bread - any variety baked in a loaf tin
- 132 Lemon drizzle cake baked in a loaf tin
- 133 Fruit crumble in a clear glass dish - please state fruit used
- 134 Cake incorporating a vegetable - please state vegetable used
- 135 Cookies - four
- 136 Decorated chocolate sponge cake (top only decorated)
- 137 A ginger cake
- 138 Any type of cake not in above classes (recipe to be supplied with exhibit)

**The Cis Weeks Preserves Classes  
(Sponsored by the family of Mrs B C J Weeks)**

Preserves to be shown in plain glass jars with plain tops and labelled - no proprietary name to be showing

- 145 Raspberry jam approx 1lb (454g)
- 146 Strawberry jam approx 1lb (454g)
- 147 Blackcurrant jam approx 1lb (454g)
- 148 Jam - any other variety approx 1lb (454g)
- 149 Fruit jelly approx ½ lb (227g) or 1lb (454g)
- 150 Lemon curd approx ½ lb (227g) or 1lb (454g)
- 151 Marmalade approx 1lb (454g)

**HANDICRAFTS**

All articles in this section must have been made by the exhibitor and can be exhibited once only at the Society's Shows. No names of exhibitor to appear on any article. Maximum Space allowed 24" x 24" (610mm x 610mm)

- 162 A knitted article not necessarily a garment or using wool
- 163 An article of cross stitch
- 164 A piece of embroidery
- 165 A hand-made card for a celebration
- 166 An item of jewellery - any medium
- 167 A beaded item - not jewellery
- 168 An article to celebrate a new baby
- 169 A pencil or pastel drawing - max 24in (610mm) x 24in (610mm)
- 170 Painting - any medium max 24in (610mm) x 24in (610mm)
- 171 Any other handicraft article not included in the above classes
- 172 Any hand-made article made from hard material max 24in (610mm) x 24in (610mm)
- 173 Any hand-made article made from soft material max 24in (610mm) x 24in (610mm)
- 174 An article made from recycled materials max 24in (610mm) x 24in (610mm)
- 175 An article made from natural materials max 24in (610mm) x 24in (610mm)

PLEASE USE THE ENTRY FORM ON PAGE 24 OF THIS SCHEDULE

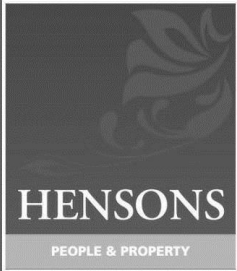


80 agents in the South West



**100's**  
OF PROPERTIES  
AVAILABLE

# WE HOLD REGULAR PROPERTY EXHIBITIONS IN LONDON



Call us on **01275 810030** to  
have your property shown at our  
next exhibition.

[www.hbe.co.uk](http://www.hbe.co.uk)





# Samuel Bird TV

Your Local Authorised  
**Panasonic Dealer**

4K Ultra HD LED TV



**Roberts & Pure  
Digital Radios**

**5 Year Panasonic TV Warranties**

Free Local Delivery - Installation available,  
Free removal of your old TV

**Freeview & Freesat Digital TV Recorders  
with built-in Catch-up TV**

- TV, Freeview Recorders, DVD & Audio  
Sales, Repairs & Installations

- LCD Wall Mount Installations  
Free quotes & advice

- Digital Aerial, Freesat & SKY Installs & Repairs

- Full range of Audio, Video & Aerial accessories

- Large range of light bulbs & batteries

- iPad, iPod, smart phone & tablet accessories

\*\*\*GREAT DEALS AVAILABLE INSTORE NOW\*\*\*

**Samuel Bird TV. 118 High Street, Nailsea, Bristol BS48 1AH**  
**Tel: 01275 853216 : Visit - [www.sbirdtv.co.uk](http://www.sbirdtv.co.uk)**

## PHOTOGRAPHY

**(Sponsored by the family of Mr A Barber)**

Colour photographic prints max 10" x 8" (255 mm x 205 mm) including any mount.

- 182 CHILDREN ONLY (Aged 12 & under) - any subject
- 183 CHILDREN ONLY (Aged 12 to 16) - any subject
- 184 Photograph of bird/s or wildlife
- 185 Photograph of a tree(s) in a local landscape
- 186 Photograph - "What I appreciate about Nailsea"
- 187 My best holiday photograph
- 188 Photograph - "My favourite garden"
- 189 Photograph - "Light and Shadow"
- 190 Photograph of a single bloom or vegetable

## CHILDREN'S CLASSES

**(All Children's Classes sponsored by Nailsea Community Trust Ltd)**

**NB PARENTAL HELP IS NOT ENCOURAGED. JUDGES WILL BE INSTRUCTED TO WITHHOLD A PRIZE IF IT APPEARS IN THEIR PROFESSIONAL JUDGEMENT THAT AN EXHIBIT IS NOT THE UN-AIDED WORK OF THE CHILD.** Ages as at date of Show must be stated on all entry forms.

**AGE 4 YEARS AND UNDER AT DATE OF SHOW**

- 215 A painting or drawing - any subject A4 size
- 216 Cress growing on a saucer
- 217 A decorated paper plate
- 218 A model made from waste material - max 300mm x 300mm

PLEASE USE THE ENTRY FORM ON PAGE 24 OF THIS SCHEDULE

AGES 5 TO 7 INCLUSIVE AT DATE OF SHOW

- 219 A Lego model not made from a kit (Max 300mm x 300mm)
- 220 A model made from recycled materials (Max 300mm x 300mm)
- 221 A miniature garden in a seed tray approx 360mm x 240mm
- 222 A dish of floating flowers
- 223 A design for a clock face on a paper plate
- 224 A painting or drawing of hot air balloons A4 size
- 225 Mr Potato Head - a fresh potato with accessories
- 226 Largest number of items in a matchbox (Swan Vestas size) Please supply list.
- 227 An animal made from fruit, vegetables or any natural materials (Max 12" x 12" (300mm x 300mm)

AGES 8 TO 11 INCLUSIVE AT DATE OF SHOW

- 230 An animal made from fruit, vegetables or any natural materials (Max 12" x 12" (300mm x 300mm)
- 231 A bookmark
- 232 A hand-drawn poster about your favourite hobby(A4)
- 233 A flower arrangement in a child's wellington boot
- 234 Mr Potato Head - a fresh potato with accessories
- 235 A birthday card for a family member
- 236 An exhibit of handicraft - max size 340mm x 340mm
- 237 A miniature garden in a seed tray approx 360mm x 240mm
- 238 A decorated flower pot (Max 165mm pot size)



Reg. Charity No. 900031

Nailsea Community Trust has sponsored the Flower Show's Children's classes for many years. There are many ways to foster a young person's talent and the Trust is proud to encourage interests in gardening, handicraft, creative art and baking. Self-confidence and investment in their communities develop when young people take part in these local activities.

Nailsea Community Trust can make grants to individuals, organisations and community events within the catchment area of Nailsea, Tickenham, Chelvey, Wraxall and Backwell, for purposes of education, need, personal development, and benefit to the community. Since 1988, more than £110,000 in grants has been awarded to individuals—this is in addition to the grants made to organisations and community events.

For further information about the Trust, applying for a grant, or making a donation, please visit [www.nailseacommunitytrust.org.uk](http://www.nailseacommunitytrust.org.uk) or write to Nailsea Community Trust, c/o 1<sup>st</sup> Nailsea Scouts HQ, Clevedon Rd, Nailsea, North Somerset, BS48 2EH.

**AGES 12 TO 16 INCLUSIVE AT DATE OF SHOW**

- 249 A piece of handicraft in any material (Max 300mm x 300mm)  
250 An animal made from fruit, vegetables or any natural materials (Max 12" x 12"  
(300mm x 300mm)  
251 A flower arrangement in a shoe  
252 A computer generated picture (A4 size)

**CHILDREN'S COOKERY**

All children's cookery to be on a plate and doily and to be covered in a clear bag

**AGES 8 TO 11 INCLUSIVE AT DATE OF SHOW**

- 266 A gingerbread person  
267 A cake of your choice  
268 A decorated giant cookie

**AGES 12 TO 16 INCLUSIVE AT DATE OF SHOW**

- 271 Decorated cup cakes - four  
272 A cake of your choice  
273 A pizza with home-made base  
274 A gingerbread person

## **NAILSEA & DISTRICT GARDENERS' ASSOCIATION**

The Gardeners' Association is a non-profit making association, aiming to provide local gardeners with fertilisers, composts and other gardening sundries at wholesale prices.

Membership is available to anyone in the area & costs only £1 per annum.

The store is in the hut at the Wareham Close entrance to Whitesfield Road allotments in Nailsea. Openings in 2019 are at 10am -12noon on the following Saturdays:

March 9<sup>th</sup>, April 6<sup>th</sup> & 20<sup>th</sup>, May 4<sup>th</sup>, 11<sup>th</sup> & 18<sup>th</sup>, June 1<sup>st</sup> & 15<sup>th</sup>, July 6<sup>th</sup>, September 7<sup>th</sup>,  
October 12<sup>th</sup> and November 2<sup>nd</sup>.

For details contact: Bev Ballagher  
Tel: 01275 790371  
E-mail: bev.ballagher@gmail.com

## PERPETUAL TROPHIES AND AWARDS

JOHN WEEKS MEMORIAL PLAQUE  
NAILSEA TOWN COUNCIL TROPHY  
ROBERT HOBBS TROPHY  
COTTAGERS' CUP  
NAYLSEY PLATE  
RAYMOND RANDALL TROPHY  
BOB VANCE TROPHY  
REG HARVEY MEMORIAL TROPHY  
TOM AND EDITH GREENWOOD TROPHY  
ERIC AND MARY ROBINS AWARD  
ENID GILES TROPHY  
DICK MITCHELL CUP  
EDITH BALSDON TROPHY  
JIM LORD TROPHY  
THATCHER CUP  
HARRY BENNET MEMORIAL TROPHY  
GORDON ADAIR CUP  
MRS GORDON ADAIR CUP  
BILL & EILEEN COPESTAKE AWARD  
BRISTOL GARDENERS Assn CURTIS CUP  
FRANK CALCRAFT MEMORIAL CUP  
MARY FILMER MEMORIAL TROPHY  
D E BUNCE CUP  
SYLVIA PULLIN TROPHY  
H P LUCAS CUP  
CIS WEEKS COOKERY VOUCHER  
JESSE AND PHYLLIS WILLIAMS TROPHY  
MAKEPEACE TROPHY  
PENNY SANTER AWARD  
AUDREY BAKER TROPHY  
MERCURY CHALLENGE CUP  
CHILDREN'S TROPHIES

Most points in members' classes  
Most points in Allotment Holders' classes  
Most points in Horticultural Classes I - 98  
Most points classes 1 - 35  
Best exhibit classes 1 - 34  
Most Points classes 2,3,18,19,20,24,25  
Class 35  
Best exhibit classes 37 - 71  
Most points classes 46 - 72  
Most points classes 37 - 45  
Most points classes 61 - 64  
Most points classes 65 - 67 & M5  
Best Rose Exhibit  
Best Gladiolus Exhibit  
Best exhibit Class 72  
Most points classes 74 - 89  
Best Exhibit classes 74 - 89  
Best exhibit Class 74  
Most Points in Classes 90 - 92  
Best Exhibit classes 90 - 92  
Most points classes 93 - 98  
Best use of plant material in floral art  
Best exhibit classes 100 - 104  
Most points class 104  
Most points classes 120 - 138  
Best exhibit classes 120 - 138  
Most points classes 120 - 151  
Most points classes 145 - 151  
Best exhibit in classes 162 - 175  
Most points classes 162 - 175  
Most points classes 184 - 190  
Trophies for best exhibit in each of the age ranges. Trophies for most points in the photography, handicrafts and cookery sections in each of the age ranges.

### RECIPE FOR FRUIT CAKE CLASS 126:

8ozs Self raising flour, 5ozs caster sugar, 6ozs margarine, 4ozs sultanas, 4ozs currants, 2ozs mixed peel, 2ozs glace cherries, 3 eggs, grated rind of lemon, pinch of salt, milk to mix. Bake in round 7" (175mm) approx tin.

### RECIPE FOR VICTORIA SPONGE CLASS 127:

6ozs caster sugar, 6ozs margarine, 6ozs SR flour, 3 eggs, pinch of salt. Bake in two 7" (175mm) approx round sandwich tins and dust with caster sugar. Sandwich with jam.

PLEASE USE THE ENTRY FORM ON PAGE 24 OF THIS SCHEDULE

## MEDALS

NATIONAL VEGETABLE SOCIETY MEDAL  
BANKSIAN MEDAL

Best individual dish of vegetables  
Most points in horticultural classes.  
Winners in 2017 and 2018 are not eligible.  
Best exhibit in Sweet Pea classes  
Best exhibit in Dahlia classes

NATIONAL SWEET PEA SOCIETY MEDAL  
DAHLIA SOCIETY BRONZE MEDAL

## POINTS AND PRIZES

CLASS NO.	FIRST	SECOND	THIRD
1, A1, A2 and A3	£5.00	£3.00	£2.00
M1, M2, M3, M4, M5, M6, M7 30, 31, 35, 37-45, 46, 72, 74, 90, 91, 92, 126 & 130	£3.00	£2.00	£1.00
Classes 100 - 104	£6.00	£4.00	£3.00
All Other Classes	£1.50	£1.00	80 pence
Points Awarded All Classes	10	6	4



# ORCHARDS

the furniture people

28 Somerset Square  
Nailsea, BRISTOL BS48 1RP

Serving the local area for over 50 years  
1965 - 2019

Tel: **01275 855936**  
[www.orchardsfurniture.co.uk](http://www.orchardsfurniture.co.uk)





*"Quality and Service at Realistic Prices"*

Contact [info@orchardsfurniture.co.uk](mailto:info@orchardsfurniture.co.uk)

PLEASE USE THE ENTRY FORM ON PAGE 24 OF THIS SCHEDULE

# Arthur E. Davey & Sons Ltd

**Independent Family Funeral Directors**  
**01275-852307**



Serving the community for more than four generations



Pre-payment Plans.  
Private Chapels of Rest.  
Home visits.



**Tony Davey** Dip F.D. M.B.I.F.D.  
**Nicola Davey** Dip. F.A.A. M.B.I.F.D.  
**David Johnston**  
**Yvonne Wadsworth**  
**Kevin Howdle**



**82 Silver Street**  
**Nailsea**  
**BS48 2DS**  
[www.aedavey.co.uk](http://www.aedavey.co.uk)

## NAILSEA MUSIC SHOP

Your one-stop music centre



- Sheet music
- Accessories
- Instrument rent or buy
- Servicing and repairs
- Music tuition
- Gifts



79a High Street, Nailsea

Tel: 01275 855021

Email: [sales@all-music.co.uk](mailto:sales@all-music.co.uk)

Website: [www.all-music.co.uk](http://www.all-music.co.uk)

# **PS Travel**

A selection of our 2019 Holidays

## **Prague, Bohemia & Dresden**

19 September - 8 days from £1019.00

Euro Tunnel crossings, Guided tours of Prague

## **Isle of Wight**

15 Sept - 5 Days from £455.00

Island tours, Osborne House and Ventnor Botanic Gardens

## **Harrogate & Yorkshire Dales**

30 Sept - 5 days from £529.00

Scenic tours, railway trip & canal trip

## **Yorkshire TV Tour**

7 Nov - 3 days from £310.00

Emmerdale location tour & lunch with cast member

Last of the Summer Wine Tour

We have many other destinations for the UK and Europe

Please call into our shop for our 2019 brochure

P S TRAVEL 117 Station Road, Nailsea

Telephone: 01275 792223

Website: [ps-travel.co.uk](http://ps-travel.co.uk)

We're  
celebrating our  
**25th**  
Anniversary



**YOUR LOCAL PREMIER WATER  
& GARDEN SUPPLIES CENTRE**

## CREATE YOUR GARDEN PARADISE

WE CARRY A FULL RANGE OF PATIO  
SLABS, PAVING KITS, STEP STONES,  
EDGINGS, DECORATIVE CHIPPINGS,  
BIRD BATHS, FENCING, GARDENING  
ORNAMENTS & POTS *plus lots more...*



## VISIT OUR ONE STOP GARDEN SHOP

Browse our stock in the undercover display area - we sell...



- Roses • Shrubs • Bedding Plants • Spring Bulbs  
& Bedding Plants
- Everything you need to Grow Your Own  
Vegetables
- Garden Tools • Planters • Hanging Baskets



**EXPERIENCED, KNOWLEDGEABLE STAFF ALWAYS READY TO HELP**

The Coal Yard, Station Close,  
Backwell, BS48 1TJ

01275 851706

[www.nailsea-patio-supplies.co.uk](http://www.nailsea-patio-supplies.co.uk)  
[nailsea-patio@btconnect.com](mailto:nailsea-patio@btconnect.com)



## MONTHLY GARDENING TALKS

The Society organises a series of meetings throughout the year with talks on a range of horticultural subjects. These meetings enable members to get together in a friendly social atmosphere and hopefully pick up some ideas and tips for their own gardening. Non-members are always made very welcome. Talks planned for 2019 are as follows:

13 Mar	Your garden in close-up	Chris & Judy Yates
10 April	The Bishops Palace past, present and future	James Cross
8 May	Container planting for flowers and vegetables	Val and Martyn Davis
12 June	Herbaceous plants	David Usher
10 July	Peonies and Irises	Sue Applegate
11 Sept	Clematis and other climbers	Jane Lindsay
9 Oct	Lavender & Co	Carole Hamblin
13 Nov	AGM followed by the history of John Brown's	Maggie Fordham
11 Dec	Beetle drive and carols	

These meetings are held at the United Reformed Church Hall, Stockway North, Nailsea, starting at 7:30pm. All are welcome.

Admission to the meeting is £2.00 for members and £3.00 for non-members.

**NAILSEA SUMMER FLOWER SHOW  
ENTRY FORM**

This form must be in the hands of the Show Secretaries by 9.00pm on the  
Wednesday before the show.

ENTRY FEES:   ADULT CLASSES           25p per exhibit  
                  CHILDREN'S CLASSES   10p per exhibit   TOTAL .....

Class No	Number of entries	Size of entry*	Class No	Number of entries	Size of entry*

Separate entry forms are requested for each exhibitor.  
\*For handicraft and art classes please state approx size of exhibit.  
Continue on separate sheet if necessary

Name and Initials (Mr/Mrs/Miss/Ms).....  
Address.....  
.....  
Tel.....                   Age.....(if child)  
Exhibitor's signature.....



Located behind  
The Hand Stadium

Sheds & Gates made to order

Quality products at  
competitive prices

**LARGE RANGE – ALL IN STOCK**



Whitehouse Farm, Davis Lane,  
Clevedon BS21 6TG  
**Telephone: 01275 400 155**  
Open: Monday-Friday 8am-5pm,  
Saturday 8.30am-2pm  
[www.avrilsfencing.co.uk](http://www.avrilsfencing.co.uk)



# LynneFernandes

— *Optometrists*

*Don't Suffer  
Any Longer*

Get relief from Dry Eye



**Symptoms:**

Dryness

Burning

Itching

Grittiness

Stinging

Soreness

Red eyes

Watery eyes

Get effective  
treatment now

*Book your Dry Eye  
appointment  
today!*

Your local, national award-winning, independent opticians

[www.lynnefernandes.co.uk](http://www.lynnefernandes.co.uk)

124a High Street, Nailsea, BS48 1AH Tel: 01275 854946



